

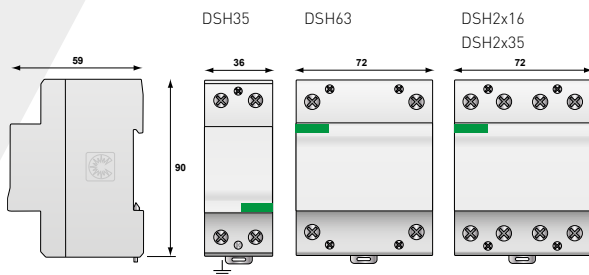
DSH SERIES



DSH 35

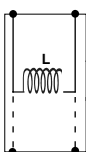
- Coordination inductors for Surge Protectors
- For use with the DS series
- 35 A and 63 A versions
- 2x16 A and 2x35 A double inductor versions
- See «coordination» pages 20-21

Characteristics

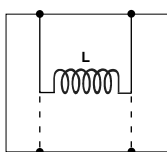


CITEL model	DSH63	DSH35	DSH2x35	DSH2x16
Description	Coordination inductor			
Max. operating voltage	Uc 500 Vac	500 Vac	500 Vac	500 Vac
Max. line current	IL 63 A	35 A	2 x 35 A	2 x 16 A
Line inductance	15 µH	15 µH	2 x 15 µH	2 x 15 µH
Mechanical characteristics				
Wiring	1 DSH in serie on each active wire		1 DSH in series on 2 active wires	
Dimensions	see diagram			
Connection	screw terminals : 6-35 mm ²			
Mounting	Symmetrical DIN rail 35 mm (EN60715)			
Operating temperature	-40/+85°C			
Protection class	IP20			
Housing material	Thermoplastic UL94 V-0			
Part number				
	360807	360806	360808	2690

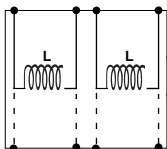
DSH35



DSH63



DSH2x16
DSH2x35



L : inductor