



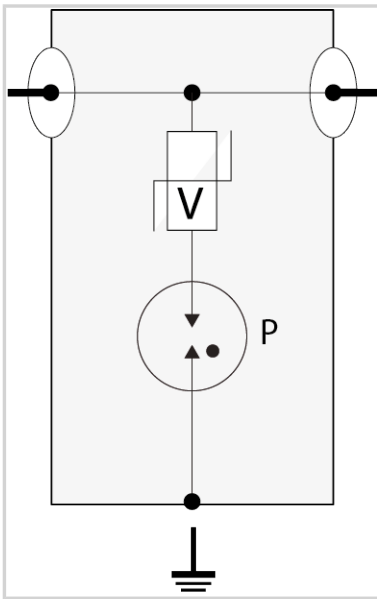
# CITEL

## Coaxial surge protector

### CXF60-N/MF + Ground Kit



- Coaxial surge protector
- DC-500 MHz
- I<sub>max</sub>: 6 kA
- Bi-directional, series installed



Electrical Characteristics		
Frequency range	f	DC-500 MHz
Insertion loss		< 0.2 dB
Return loss		> 19 dB
Impedance		50 ohms
VSWR		<1.25:1
Max. load current @25°C	IL	6 A
Max. discharge current max. withstand @ 8/20 μs by pole	I <sub>max</sub>	6 kA
Protection mode(s)		Common mode
Protection level @1kV/μs (C3)	Up	< 800 V
Max Power		42 W
Mechanical Characteristics		
Connection to Network		Connector N Male/Female
Operating temperature	Tu	-50°C to +85°C
Protection rating		IP65
Attachment		Earthing kit
Standards		
Certification		UL 497E
Environmental standards		EU RoHS
RohS compliance		Yes
Part number		
<b>62009</b>		

