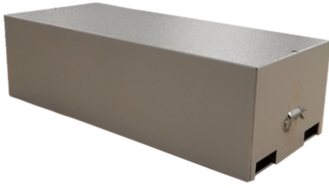


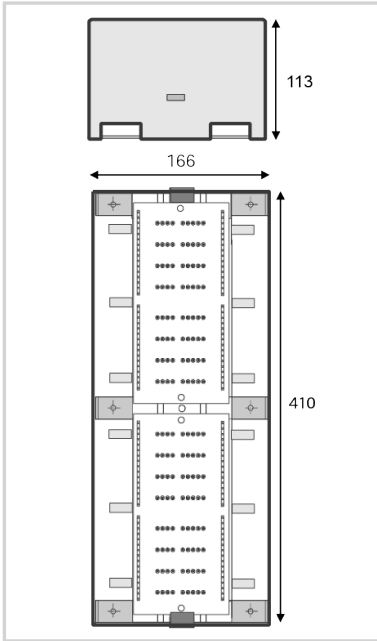


# CITEL

### BN32-V



- Metal enclosures for E280
- Max. number of pairs : 32



#### Electrical Characteristics

Network		Low current
Max. frequency	f max.	20 MHz
Insertion loss		< 1 dB
Max. load current @25°C	IL	10 A
Max. discharge current <i>max. withstand @ 8/20 μs by pole</i>	I <sub>max</sub>	10 kA
Nominal discharge current <i>C2 Category</i>	I <sub>n</sub>	5 kA
Impulse current <i>2 x 10/350 μs Test - D1 Category</i>	I <sub>imp</sub>	2.5 kA

#### Mechanical Characteristics

SPD configuration		32 pairs max
Format		Metallic box
Mounting		Wall
Housing material		Metallic
Operating temperature	T <sub>u</sub>	-40/+85°C
Protection rating		IP20
Connection		screw terminal - max. section 1,5 mm <sup>2</sup>
Max. number of E280s		16.0000
Max. number of pairs		32.0000
Dimensions		See diagram

#### Part number

71377

