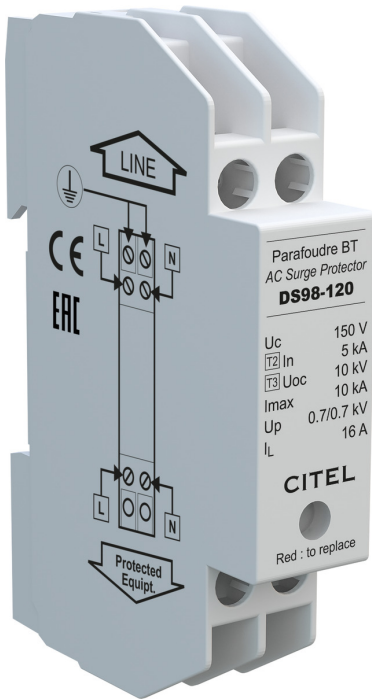




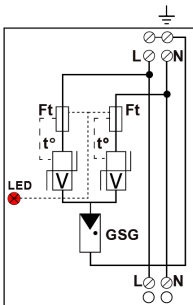
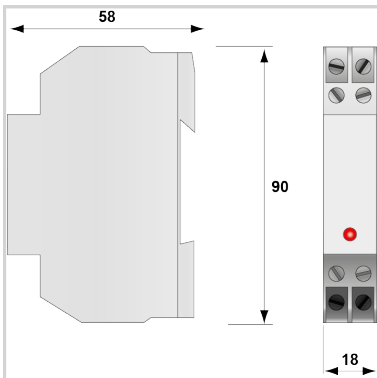
# CITEL

## Compact single-phase type 2 (or 3) surge protector - 120 V - Monobloc

### DS98-120



- ▶ Discover our latest innovation : the [DACN10-11-150](#)
- ▶ Cost effective single-phase surge protector
- ▶ Type 2 (or 3) monobloc
- ▶ In : 5 kA
- ▶ Imax : 10 kA
- ▶ Common/Differential mode
- ▶ Series or parallel wiring
- ▶ EN 61643-11, IEC 61643-11, UL1449 ed.5 compliance



V: High-energy varistor  
 GSG: Specific Gas Tube  
 Ft: Thermal fuse  
 t\*: Thermal disconnection system  
 MI: Disconnection indicator

#### Electrical Characteristics

SPD type	IEC	2+3
Network		120 V single-phase
AC system		TN
Nominal line voltage	Un	120 Vac
Max. AC operating voltage	Uc	150 Vac
Max. load current @25°C	IL	16 A
Temporary Over Voltage (TOV) Characteristics - 5 sec. <i>Without disconnection</i>	UT	180 Vac withstand
Temporary Over Voltage (TOV) Characteristics - 120 mn <i>Without disconnection or with safety disconnection</i>	UT	230 Vac disconnection
Residual Current <i>Leakage current to Ground</i>	Ipe	None
Follow current	If	None
Nominal discharge current <i>15 x 8/20 μs impulses</i>	In	5 kA
Max. discharge current <i>max. withstand @ 8/20 μs by pole</i>	Imax	10 kA
Withstand on Combination waveform IEC 61643-11 <i>Class III test: 1.2/50μs - 8/20μs</i>	Uoc	10 kV
Withstand on overvoltages IEEE C62.41.1		10 kV
Protection mode(s)		Common/Differential mode
Protection level L/N <i>@ In (8/20μs)</i>	Up L/N	0.7 kV
Protection level N/PE <i>@ In (8/20μs)</i>	Up N/PE	0.7 kV
Admissible short-circuit current	Iscsr	10 000 A

#### Mechanical Characteristics

SPD configuration		Single phase
Connection to Network		By screw terminals: 2.5mm <sup>2</sup> max.
Format		Monobloc modular box
Mounting		Symmetrical rail 35 mm (EN 60715)
Housing material		Thermoplastic UL94 V-0
Operating temperature	Tu	-40/+85°C
Protection rating		IP20
Failsafe mode		Disconnection from AC network
Disconnection indicator		Red light on
Remote signaling of disconnection		option DS98S-120
Dimensions		See diagram

#### Disconnectors

Thermal disconnector		Internal
Installation ground fault breaker		Type 'S' or delayed
Back-up protection device		Fuses type gG - 20A

#### Standards

Standards compliance		IEC 61643-11 / EN 61643-11 / UL1449 ed.5
Certification		

#### Part number



CITEL

*Compact single-phase type 2 (or 3) surge protector - 120 V - Monobloc*

**DS98-120**

3509012

